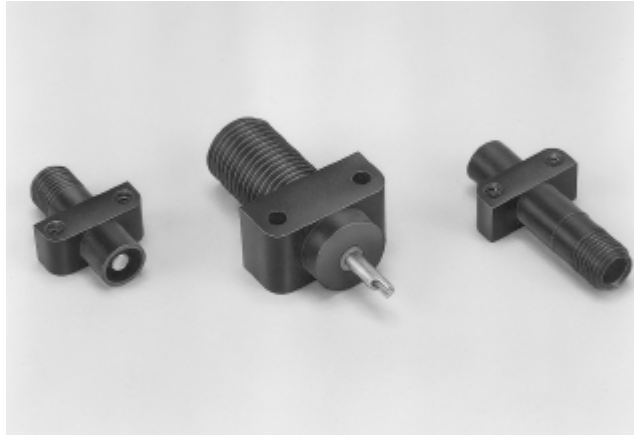


Various Specials (Continued)

Printed Circuit Board
Receptacles

Product Facts

- Molded epoxy housings per MIL-M-24357 (GEI-5)
- Small, lightweight, leakproof
- 10 KV, LGH 1/2
Part Number 866803-1 (with mounting holes)
Part Number 866804-1 (with threaded mounting holes and potting shell)
- 15 KV, LGH 1/2L
Part Number 866806-1 (with mounting holes)
Part Number 866805-1 (with threaded mounting holes and potting shell)
- 20 KV, LGH 1
Part Number 830632-3 (with mounting holes)

Multiple Receptacle with
Integral, Molded Flange for
Bulkhead Applications
(Gold Pins)

- Single, Part Number 867606-4
- Dual, Part Number 861662-4
- Triple, Part Number 861660-4
- Quadruple,
Part Number 861658-4
- Quintuple,
Part Number 861657-4

