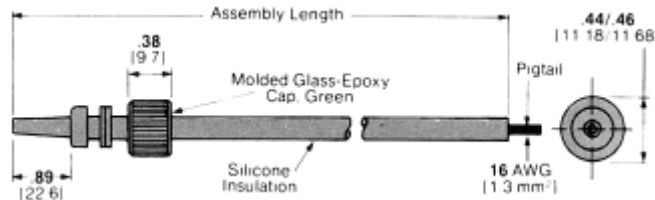


LGH Lead Assemblies and Receptacles, 15 KVDC, LGH 1/2 L

Single End Lead Assemblies

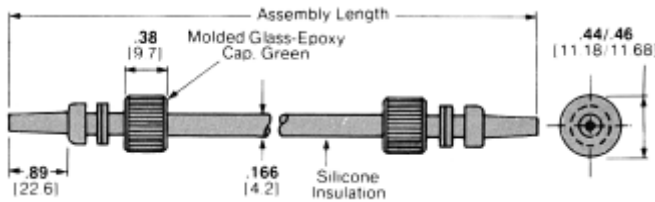


Part Number 830613

| Assembly Length | Part Number |
|-----------------|----------------------------|
| 6.0 152.4 | 1-830613-0 |
| 12.0 304.8 | 830613-2 5830613-2* |
| 18.0 457.2 | 1-830613-2 1-5830613-2* |
| 24.0 609.6 | 830613-1 5830613-1* |
| 36.0 914.4 | 830613-7 5830613-7* |
| 48.0 1219.2 | 1-830613-4 1-5830613-4* |

RoHS compliant Part Number.

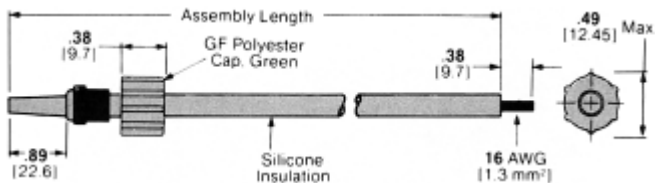
Double End Lead Assemblies



Part Number 830614

| Assembly Length | Part Number |
|-----------------|-------------|
| 6.0 152.4 | 1-830614-5 |
| 12.0 304.8 | 830614-2 |
| 18.0 457.2 | 830614-3 |
| 24.0 609.6 | 830614-1 |
| 36.0 914.4 | 1-830614-6 |
| 48.0 1219.2 | 2-830614-5 |

Single End Lead Assemblies with Positive Stop Ferrules

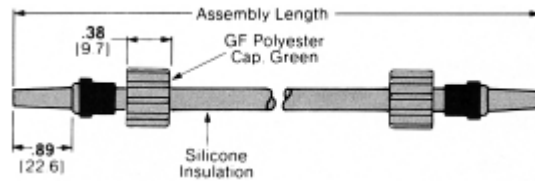


Part Number 862547

| Assembly Length | Part Number |
|-----------------|---------------------------|
| 6.0 152.4 | 862547-1 |
| 12.0 304.8 | 862547-4 5-862547-4* |
| 18.0 457.2 | 862547-6 5-862547-6* |
| 24.0 609.6 | 862547-8 |
| 36.0 914.4 | 862547-9 |
| 48.0 1219.2 | 1-862547-9 6-862547-9* |

RoHS compliant Part Number.

Double End Lead Assemblies with Positive Stop Ferrules

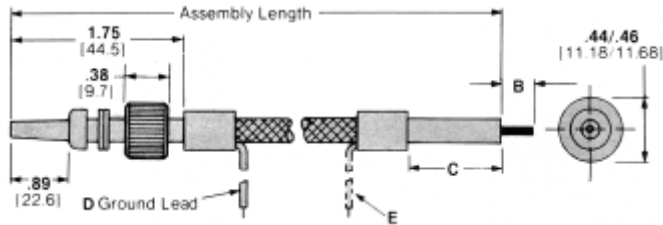


Part Number 862548

| Assembly Length | Part Number |
|-----------------|-------------|
| 6.0 152.4 | 862548-1 |
| 12.0 304.8 | 862548-4 |
| 18.0 457.2 | 862548-6 |
| 24.0 609.6 | 862548-8 |
| 36.0 914.4 | 1-862548-6 |
| 48.0 1219.2 | 1-862548-4 |

Shielded Single End Lead Assemblies

LGH Lead Assemblies and Receptacles, 15 KVDC, LGH 1/2 L (Continued)

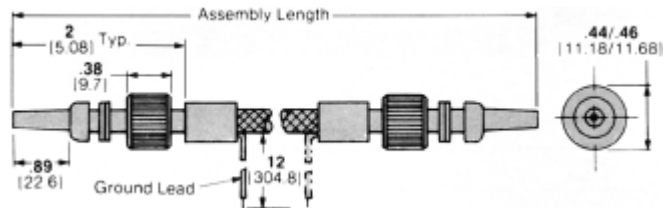


Part Number 858886

| Assembly Length | Terminated End | | Pigtail End | | Part Number | RoHS Part Number |
|-----------------|-----------------------------|--|--------------|------------------|-------------|------------------|
| | Ground Lead Length(s) D & E | | C | Pigtail Length B | | |
| 12.0 304.8 | 8.0 203.2† | | 1.5 38.1 | .25 6.4 | 858886-2 | 5-858886-2 |
| 18.0 457.2 | 8.0 203.2 | | 3.0 76.2 | .38 9.7 | 1-858886-4 | — |
| 24.0 609.6 | 12.0 304.8 | | 3.0 76.2 | .38 9.7 | 1-858886-8 | — |
| 36.0 914.4 | 12.0 304.8* | | 6.0 152.4 | .38 9.7 | 858886-1 | — |
| | 8.0 203.2† | | 3.0 76.2 | .38 9.7 | 858886-6 | — |

*One ground lead, pigtail end only.
†One ground lead, terminated end only.

Shielded Double End Lead Assemblies

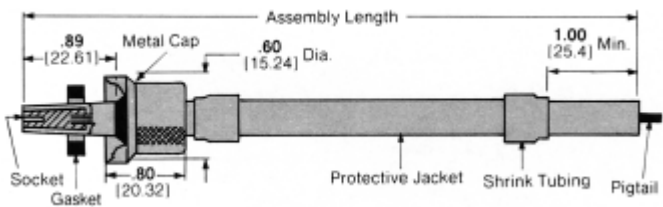


Part Number 858945

| Assembly Length | Part Number |
|-----------------|-------------|
| 12.0 304.8 | 1-858945-6 |
| 18.0 457.2 | 1-858945-5* |
| 24.0 609.6 | 2-858945-1 |
| 36.0 914.4 | 858945-3 |
| 48.0 1219.2 | 1-858945-4 |

*Two ground leads, 12.0 [304.8] each.

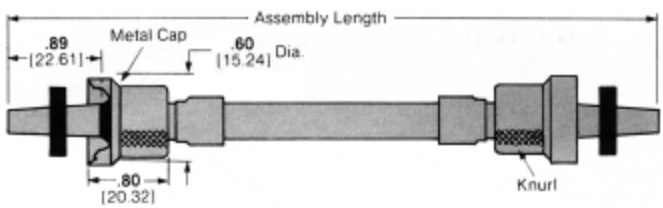
RFI Shielded Single End Lead Assemblies*



Part Number 861809

| Assembly Length | Part Number |
|-----------------|-------------|
| 12.0 304.8 | 861809-1 |
| 18.0 457.2 | 861809-4 |
| 24.0 609.6 | 861809-5 |
| 36.0 914.4 | 861809-6 |

RFI Shielded Double End Lead Assemblies*



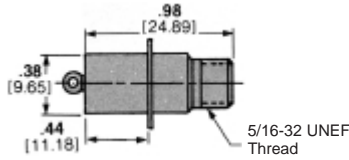
Part Number 861810

| Assembly Length | Part Number |
|-----------------|-------------|
| 12.0 304.8 | 861810-1 |
| 18.0 457.2 | 861810-6 |
| 24.0 609.6 | 861810-7 |
| 36.0 914.4 | 861810-9 |

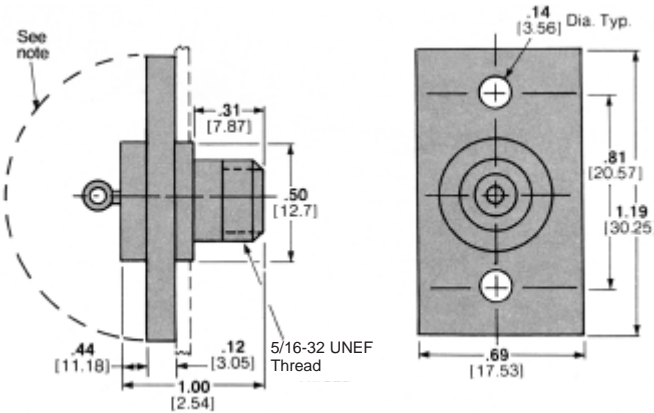
* These RFI Shielded Lead Assemblies mate with Receptacle Part Number 861253-1.

Glass-Epoxy Receptacles with .89 [22.61] Barrel Depth

Flanged, For Hermetic Seal
Part Number 861253-1
RoHS Part Number 5-861253-1
Weight — 3 grams

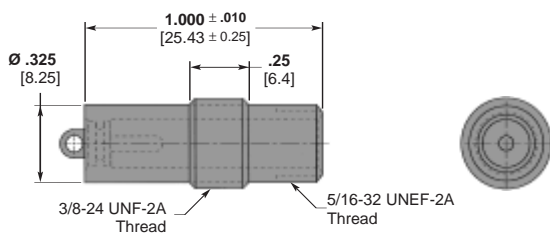


Flanged, Bolt Mount
Part Number 858857-1
RoHS Part Number 5-858857-1
Weight — 6 grams



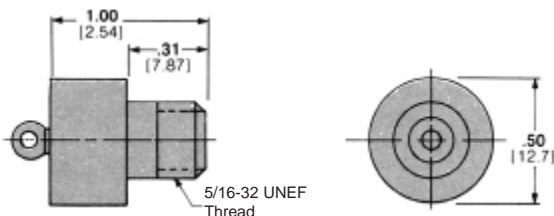
Note: If the panel or mounting hardware is at ground potential, guard against arc-over and breakdown within the area defined by this line.

Special Receptacle
Part Number 448464-1



Note: Receptacle will accept a LGH 1/2 L lead with a .89 [22.6] molded end length.

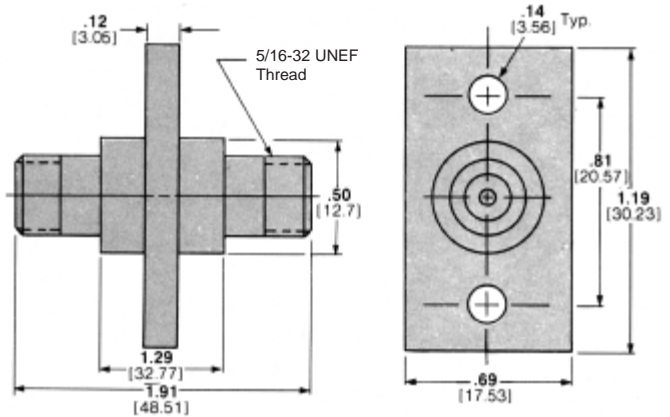
For Encapsulated Units
Part Number 858855-1
RoHS Part Number 5-858855-1
Weight — 3 grams



Receptacles are available with gold plated contacts.

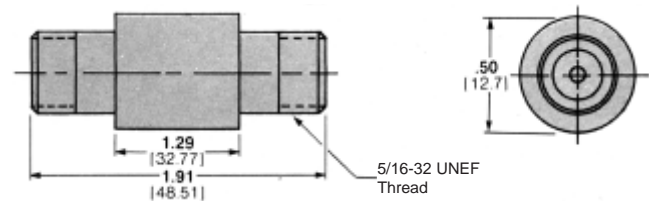
Bolt-Mount, Feed-Through
Part Number 858856-1

Weight — 14 grams



Splice
Part Number 858082-1

Weight — 10.5 grams



T Connector
Part Number 850736-1
RoHS Part Number 5-850736-1

Weight — 23 grams

